

ARCHITECTURAL DATA SHEET

Tiaa

Architectural Linear — Interior · ELV

Quietly architectural.

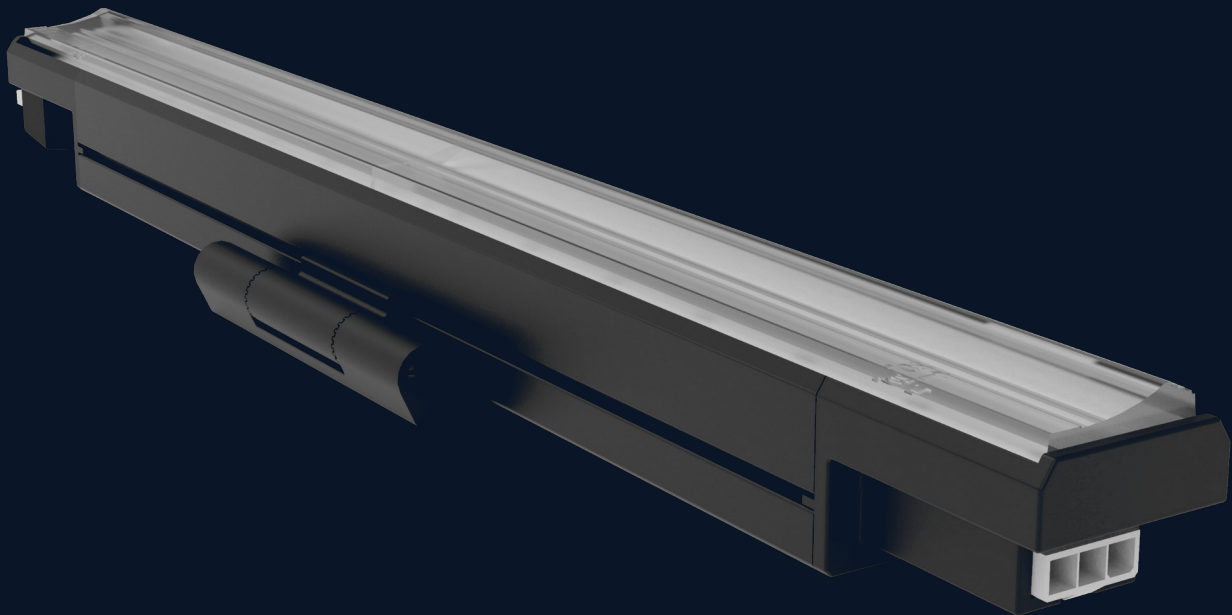
Interior-rated, high-efficacy single-channel LED linear cove luminaire on a low-voltage ELV platform. Three field-selectable optics — 100° wash, 15×90° linear, and 30×75° with 25° tilt — share one ELV-dimmed monochromatic platform with order-time selectable CCT or single-color LED, in 1' and 4' lengths.

100° · 15×90° ·
30×75°

IP40 INTERIOR

ELV 100-1% ·
MONO

100-220VAC



AVAILABLE WITH*

Coda™

Forte™

Sense™

Shift™

Token™

Tone™

*Not all technologies are available on every fixture.

Three optics.

One ELV monochromatic platform · selectable beam and color.

100°

Wash · Frosted PC

Wide wash distribution

LED Configuration

Monochromatic

White 2700K · 3000K

288 · 294 lm/ft

White 3500K · 4000K

300 · 313 lm/ft

Red · Green (LED)

90 · 295 lm/ft

Royal Blue · PC Amber

119 · 289 lm/ft

Power

3.5 W typ / ft

Efficacy

100 lm/W typ

15×90°

Linear · Optic Array

Linear wash distribution

LED Configuration

Monochromatic

White 2700K · 3000K

345 · 356 lm/ft

White 3500K · 4000K

363 · 375 lm/ft

Red · Green (LED)

95 · 363 lm/ft

Royal Blue · PC Amber

146 · 325 lm/ft

Power

3.5 W typ / ft

Efficacy

120 lm/W typ

30×75°

Asymmetric · 25° tilt

Wall-graze distribution

LED Configuration

Monochromatic

White 2700K · 3000K

310 · 319 lm/ft

White 3500K · 4000K

325 · 338 lm/ft

Red · Green (LED)

95 · 320 lm/ft

Royal Blue · PC Amber

129 · 313 lm/ft

Power

3.5 W typ / ft

Efficacy

105 lm/W typ

COLOR OPTIONS · ORDER-TIME SELECTION

White: 2700K · 3000K · 3500K · 4000K (80 CRI standard, 90 CRI optional)

Single-color LED: Red (624–634 nm) · Green (520–540 nm) · Royal Blue (440–460 nm) · PC Amber
305 mm (1') and 1219 mm (4') lengths. All three optics and all color options compatible across both lengths.

ELECTRICAL · ALL VARIANTS

Input Voltage	100–220VAC, auto-ranging, 50/60Hz
Power Consumption	3.5 W typ · 4 W max / linear foot
Power Factor	0.99 @ 120VAC · 0.90 @ 220VAC
Surge	4 kV maximum common (Gnd to L, Gnd to N)

Calculated values · actual results vary within ±5%

© 2026 Arco Illumination Pte. Ltd.

02 / 04

Built for the field.

Shared across all three optics.

Mechanical

Dimensions (1')

28 × 49 × 305 mm

Dimensions (4')

28 × 49 × 1219 mm

Weight

0.25 kg (1')

0.85 kg (4')

Housing

Extruded aluminum
Black powder-coated

Lens

Frosted PC (100°)
Optic array (15×90° /
30×75°)

Connections

Integral male/female
Quick connectors

Mounting

Surface · integral bracket

Environment

Operating Temp

-40 to 50° C

Startup Temp

-20 to 50° C

Storage Temp

-40 to 80° C

Ingress Rating

IP40 — Dry / Damp
Interior only

Impact

IK06

Vibration

N/A — interior product

Humidity

0 - 95%, non-condensing

Corrosion

N/A — interior product

Compliance

Approbation

ETL · CE

Location

Dry · Damp
Interior only

Standards

IEC 60529 (IP)
IEC 62262 (IK)

RoHS

Compliant

Patent Portfolio

Protected by an 80+
patent portfolio across
US, EU, Asia

AVAILABLE WITH*

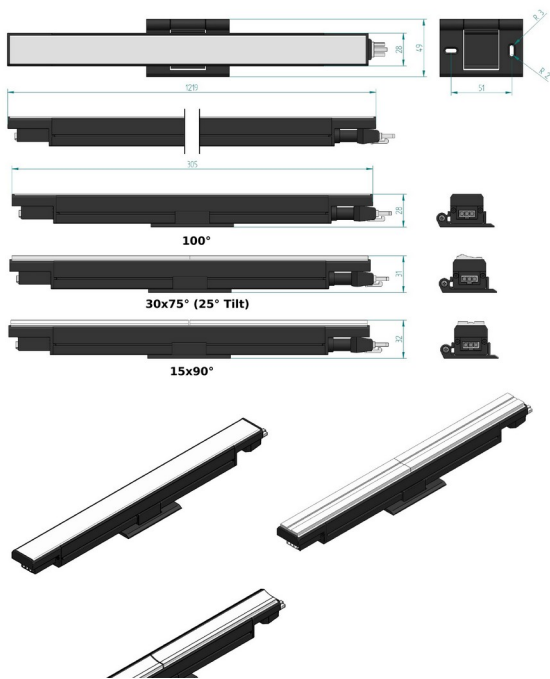
Coda™ Forte™ Sense™ Shift™ Token™ Tone™

*Not all technologies are available on every fixture.

Geometry and output.

1' and 4' dimensions · 4' 100° photometric reference (4000K).

Dimensions



All dimensions in mm. Detailed CAD drawings available on request.

Photometrics

100° Wash · 4000K · 4' section

Beam Angle	100°
Lumens	1,230 lm
Input Power	12.0 W
Efficacy	107 lm/W
Peak Candela	487 cd

ZONAL LUMEN SUMMARY

Zone (°)	Lumens	% Lum.
0-30	373.9	29.2
0-40	602.9	47.1
0-60	1,018.9	79.7
60-90	228.4	17.9
0-90	1,247.4	97.5

CENTER BEAM · BEAM WIDTH

Distance · fc / lx · width (cm)

1 m	45.1 / 485.5	241
2 m	11.3 / 121.4	482
3 m	5.0 / 53.9	723
4 m	2.8 / 30.3	964
5 m	1.8 / 19.4	1205

Full IES photometric files for each variant available at arco-illumination.com or on request.

C O N T A C T

Specify Tiaa.

Singapore HQ

Arco Illumination Pte. Ltd.
No. 8 Penjuru Lane
Singapore, 609189

Online

arco-illumination.com
info@arco-illumination.com

OEM · Distributor

partnerships@arco-illumination.com